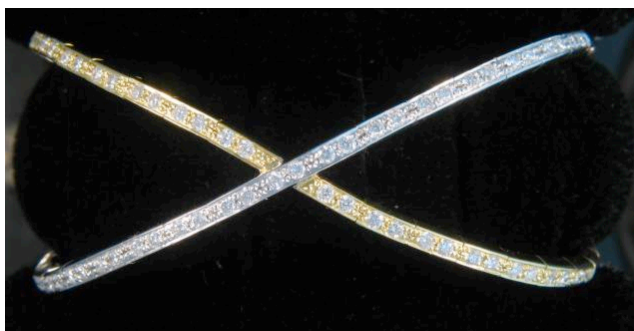


## FOR IMMEDIATE RELEASE

Steffen Thomas Museum of Art  
(STMA)

Amelia Schwartz  
Marketing Associate  
706-342-7557  
706-342-4348 (fax)

[aschwartz@steffenthomas.org](mailto:aschwartz@steffenthomas.org)



*This year's grand raffle prize, an elegant lady's two tone 18 karat cuff bracelet with round brilliant cut diamonds. Donated by Whidby Jewelers, it is valued at \$5,299.*

### STMA 2011 Spring Fundraiser is off to the Races

BUCKHEAD – From the Kentucky Derby to the Churchill Downs, fast horses and fancy hats have always been a winning combination. This year, the Steffen Thomas Museum of Art's seventh annual spring fundraiser offers a home-grown version of this glamorous theme with ***Hats and Horses – My Fair Lady Goes to Steffen Thomas Downs.***

The event, scheduled for Saturday, April 2<sup>nd</sup>, from 6:30 to 10 PM, features an elegant buffet dinner catered by Doug Cason of Waffle House, served from 7:15 to 8:30 PM, plus music and dancing with Sally and the Six Grand Band. Other highlights include raffles, door prizes and a silent auction offering hand-crafted items, jewelry, and works of art, along with many other exciting items and services provided by local businesses.

This year's grand raffle prize is a magnificent lady's two tone 18 karat cuff bracelet with 1.50T and round brilliant cut G/H Si1 diamonds. The bracelet, graciously provided by Whidby Jewelers, is valued at \$5,299.

The second prize is a \$100 gift certificate to STMA's Gift Shop; third, a Steffen Thomas print of your choice from the Museum Shop, valued at \$50. Raffle tickets are priced at \$10 each; \$25 for three. You need not be present to enter the winner's circle!

Special fun activities include a horse race game, a Steffen Thomas “hat lady” and horse art scavenger hunt, a rent-a-hat table provided by Leara Rhodes for those who arrive without a hat, plus a best hat contest and parade.

As an additional treat, the evening also features the debut of a new temporary exhibit of Steffen Thomas art – *Ladies: Busts and Portraits*. The show is the third in a series of five exhibits featuring the best of Steffen Thomas from private collections featuring some art never before seen by the public. It will remain on display at the museum through May.

So gents, get out that snappy ascot; ladies, dust off your pearls and fanciest *chapeau*, and come join us for an evening filled with elegance, entertainment and excitement in a setting showcasing the astonishing, prolific art of Steffen Thomas. Cocktail attire is recommended. Hats and derbies are most welcome!

Admission to **Hats and Horses** is \$60 per person; \$110 for two. For reservations/admission, please call the museum at 706-342-7557. A guest list will be at the door; tickets will be mailed upon request. The RSVP deadline is March 23<sup>rd</sup>; space is limited. All proceeds benefit STMA’s **Arts Outreach Program** offering year-round art education to families, students and individuals in our tri-county Lake Oconee community.

We offer our sincere thanks to the following whose generous support made this event possible: Bank of Madison; Jim Boyd & Associates, Inc.; David P. Crawford, CPA; DreamTeam Technologies, Inc.; Dress the Walls; HouseSmart; Madison Studios; Morgan County Citizen; Smith Communications, Inc.; Steffen Thomas Art Representatives, LP; Waffle House Catering; Whidby Jewelers; and Yellowbook.

The Steffen Thomas Museum of Art is located at 4200 Bethany Road in Buckhead. It is open to the public Tuesday through Saturday from 11 AM to 4 PM. For more details and directions, please call 706-342-7557 or visit [www.steffenthomas.org](http://www.steffenthomas.org).